

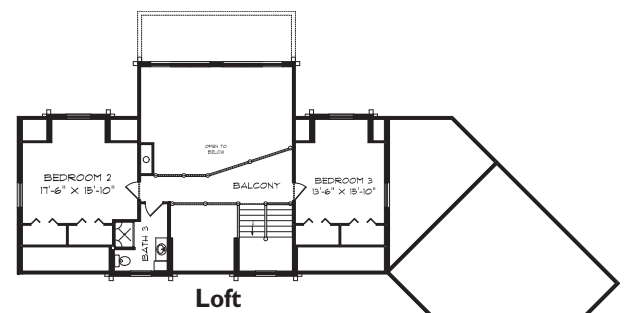
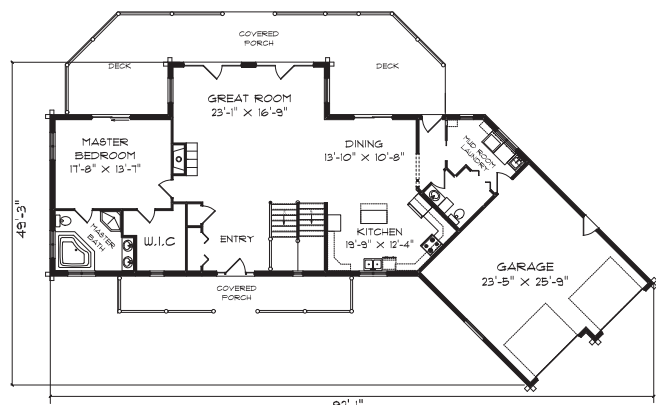


Golden Eagle LOG



If you're like most people, you're very busy, and don't have the time to shop for every single component in your new log home, we can help you. **Golden Eagle** has the most complete log home package period and it is kiln dried too!

We include the kitchen and bath cabinetry, countertops, fireplace, trim, prehung 6 panel pine doors, plumbing fixtures, light fixtures, closet shelving, overhead garage doors, medicine cabinets, even the kitchen sink. And yes, we offer choices on all these products too! All for about the same price as our competitor's shell package.



Double Eagle Deluxe
 TOTAL SQ. FT.2,659
 COMPLETELY BUILT and ready to move in approx. \$500,000 to \$635,000*
 COMPLETE PACKAGE \$174,652 to \$309,493
 *Includes Complete Package

We make it easier... for you to own a Log Home or Hybrid Timber Frame

- Golden Eagle offers many services:
- Our professional **Log Home Planners** will work with you, one on one to find your perfect floor plan.
 - We have certified **Log Home Kitchen Designers** to create your dream kitchen.
 - We offer professional **pre-finishing options** on doors, trim, planking and windows.
 - You can be assured the "complete package" from **Golden Eagle Log Homes** will be engineered to work as a system; floors, roofs, walls, stairways, energy saving insulations, cabinets, door swings and window jamb sizes are all going to fit.

Golden Eagle even has a 25 year warranty and kiln-dried logs. Relax, we've thought of everything and it's included!



Dealer Inquiries Invited